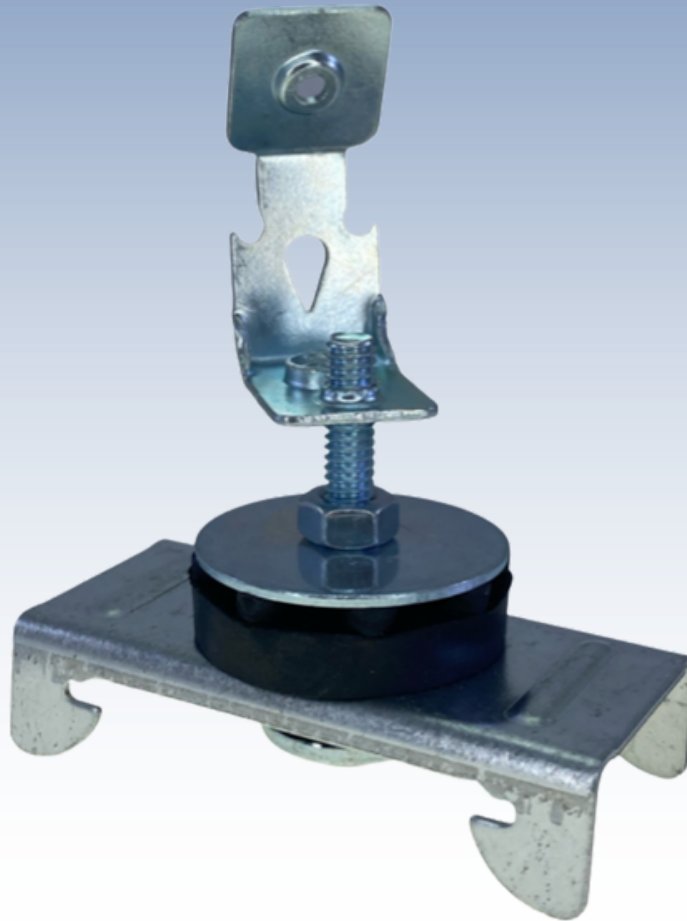


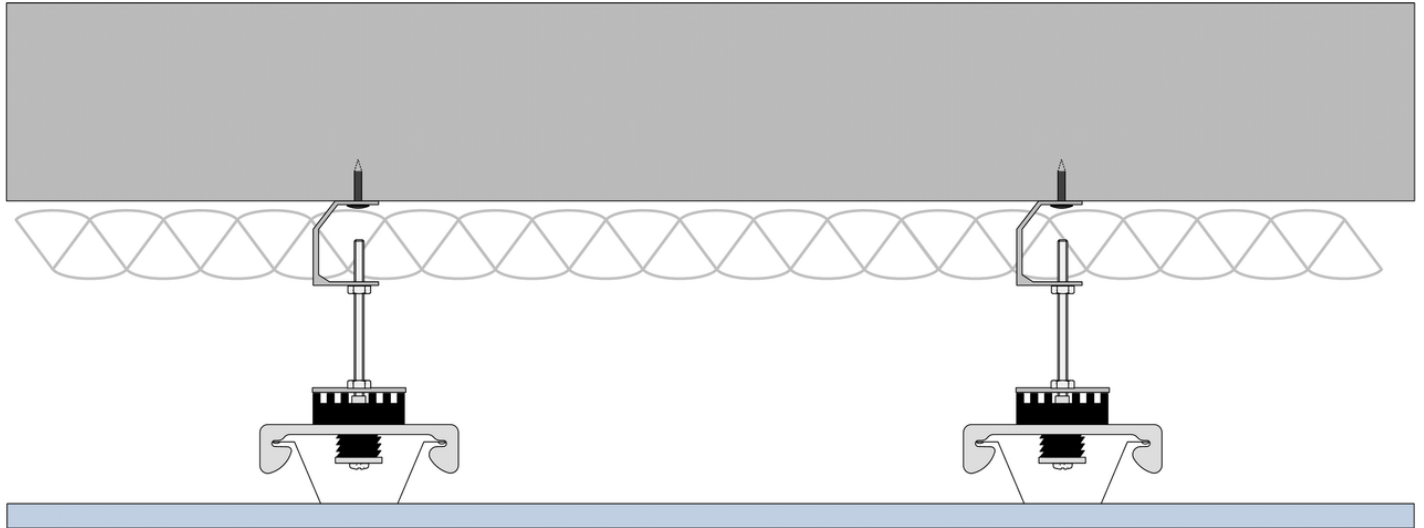
PAC International



RSIC-1 ADM

PAC International, LLC.
World Class Noise Control Solutions
Canby, OR – Las Vegas, NV
866-774-2100
info@pac-intl.com
www.pacinternationalllc.com

PAC's RSIC-1 ADM is the perfect solution for areas where you need high levels of sound isolation but space is at a premium. It can be shot into the bottom of concrete slabs and composite decks for quick and easy installation. The RSIC-1 ADM can be installed with plenum depths as small as 2-3/4". It's a great alternative to springs for condominiums, gyms, amenity spaces, generator rooms, and retail spaces below living units.

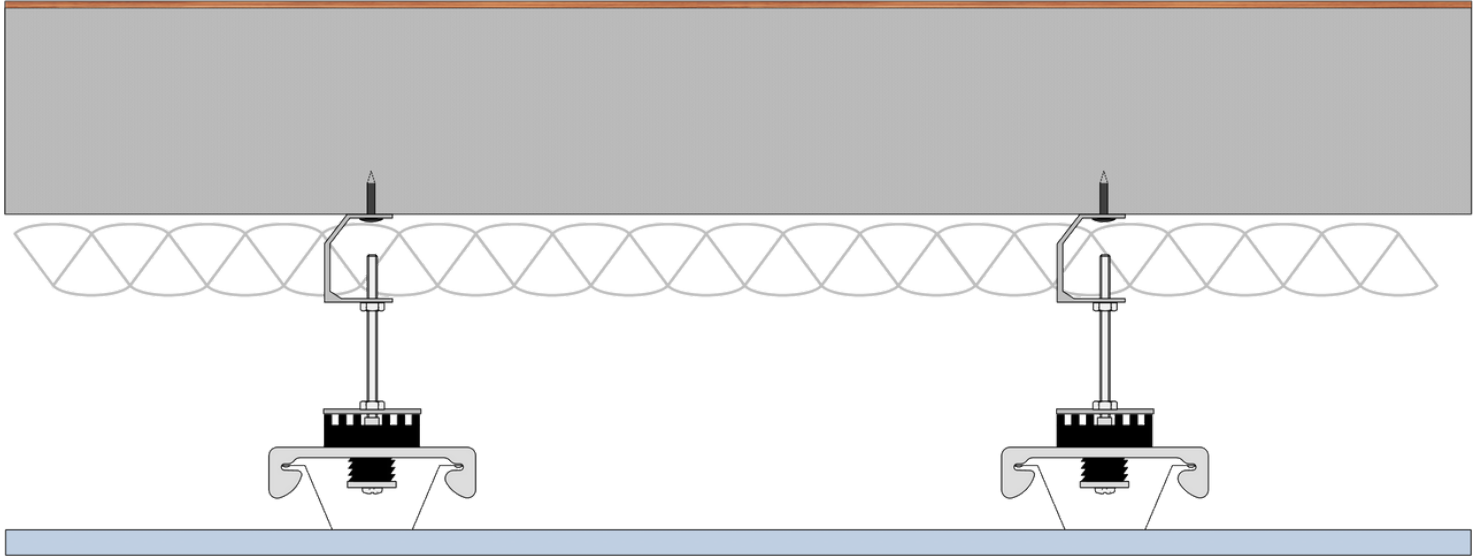


Test Results with an 8" Concrete Slab

Flooring + Underlayment	Ceiling	STC	IIC	HIIC
Bare	None	57	30	30
Bare	RSIC-1 ADM + 2-3/4" AS + 1GWB	63*	55	54
Bare	RSIC-1 ADM + 2-3/4" AS + 2GWB	63*	59	59
LVT	RSIC-1 ADM + 3-3/8" AS + 1GWB	63*	66	82
Wood + QT4002	RSIC-1 ADM + 2-3/4" AS + 2GWB	63*	64	75
Tile + QT4002	RSIC-1 ADM + 3-3/8" AS + 1GWB	63*	64	71

*Results limited by laboratory flanking.





**A lower-cost alternative to standard
spring hangers**



**Can be “shot-in” to concrete decks for
fast and easy installation**



**Maximum acoustical performance
with minimum ceiling drop**

